

4-way cassette 800 x 800

Reversible system 2.80 – 16 kW (R32/R410A)



+ SERVICES

Installation time

- The 800 x 800 cassette fits perfectly into suspended ceilings thanks to its low installation height (248 mm) and also into high ceilings.
- Installation possible up to 4.20 m depending on model.
- In addition, it is equipped as standard with a pump that can lift condensate up to 850 mm..

+ APPRAISAL

Energy savings

- The SOR-MSK wall-mounted motion sensor (optional) automatically optimizes comfort while limiting energy consumption.
- The P-AP160NAE2 front panel incorporates the standard motion sensor.

+ SOUND COMFORT

Low noise level

- Up to 27 dB(A)
- With 4 fan speeds, the 800 x 800 cassette is one of the quietest on the market and ensures a high air circulation rate.

Indoor units



RCI-1.0FSR1(2)	RCI-3.0FSR1(2)
RCI-1.5FSR1(2)	RCI-4.0FSR1(2)
RCI-2.0FSR1(2)	RCI-5.0FSR1(2)
RCI-2.5FSR1(2)	RCI-6.0FSR1(2)

Model RCI-(1.0-6.0)FSR2 incorporates an R32 refrigerant leak detection probe (compatible with air365 R32).

Compatible controls and accessories

Individual checks



Simple wired controller
Model: PC-ARC-E



Infrared controller
Model: PC-AWR



Intuitive multifunction cable control
Model: PC-ARFG2-E(B)
Model: PC-ARFG3-E(B)*



Remote sensor
Model: THM R2AE

*The PC-ARFG3-E(B) remote control includes an audible and visual alarm for R32 refrigerant management.



Connectors
Model: PCC 1A



Infrared receiver
Model: PC-ALH3
(to be integrated into P-N23NA2)
Model: PC-ALHZ1 (external wall-mounted type)



Motion sensor
Model: SOR-MSK



Fresh air kit
Model: PD-75A

Indoor units	Unit	RCI-1.0FSR1(2)	RCI-1.5FSR 1(2)	RCI-2.0FSR 1(2)	RCI-2.5FSR 1(2)	RCI-3.0FSR 1(2)	RCI-4.0FSR 1(2)	RCI-5.0FSR 1(2)	RCI-6.0FSR 1(2)
Power (adjustable) ⁽¹⁾	hp (horse-power)	1.00	1.30 – 1.50	1.80 – 2.00	2.30 – 2.50	3.00	4.00	5.00	6.00
Capacity Cooling UTOPIA Prime & IVX	kW	2.50	3.60	5.00	5.60	7.10	11.20	14.00	16.00
Capacity Heating UTOPIA Prime & IVX	kW	2.80	4.00	5.60	6.30	8.00	12.50	16.00	18.00
Capacity Cooling SET FREE	kW	2.80	3.80 – 4.00	5.20 – 5.60	6.70 – 7.10	8.00	11.20	14.00	16.00
Capacity Heating SET FREE	kW	3.20	4.20 – 4.80	5.60 – 6.30	7.50 – 8.50	9.00	12.50	16.00	18.00
Noise level in Cooling mode (pressure) (low/medium/high speed ¹ /high speed ²) ⁽³⁾⁽⁴⁾	dB(A)	27/28/30/33	27/30/31/35	27/30/32/37	28/32/36/42		33/39/43/48	35/40/45/48	37/41/46/48
Sound power	dB(A)	52	53	55	56	57	64		65
Airflow in Cooling mode (low/medium/high speed ¹ /high speed ²) ⁽⁴⁾	m ³ /h	540/660/780/900	660/840/1020/1260	660/840/1020/1320	840/1080/1380/1620		1200/1440/1860/2220	1260/1560/1980/2220	1320/1680/2100/2220
Condensing pump	-	Yes							
Max. elevation	mm	850							
Diameter of pipes (Liq/Gas)	inches	1/4 - 1/2				3/8 - 5/8			
Condensate outlet diameter (ext.)	mm	32							
Box dimensions (HxLxD)	mm	248 x 840 x 840				298 x 840 x 840			
Panel dimensions (HxLxD)	mm	40 x 950 x 950							
Net weight of the box + panel	kg	20 + 6.50	21 + 6.50	22 + 6.50	26 + 6.50				
Power supply	-	1 ~ 230V 50 Hz							
Indoor unit power cable	-	3G1.5 mm ²							
Bus cable section (EN 60 335-1) ⁽²⁾	mm ²	2 x 0.75 shielded (in accordance with local regulations)							
Max. current	A	5							
Part number for standard White panel (Black)	-	P-N23NA2 → RAL 9002 (P-AP160KA3-EU → RAL 9005)							
White TwinSense front panel (integrated motion sensor)	-	P-AP160NAE2							

⁽¹⁾ Sound pressure is measured under the following conditions: 1.50 m below the unit.

⁽²⁾ Data shown is for indication purposes only. It is the installer's responsibility to ensure that these Cable sections meet the needs of the facility and current standards.

⁽³⁾ High-speed access is possible with the PC-ARFG2(3)-E(B) and PC-ARC-E remote controls.

⁽⁴⁾ Very low speed is available in Thermo-off mode.

Silent-Iconic design of front panel

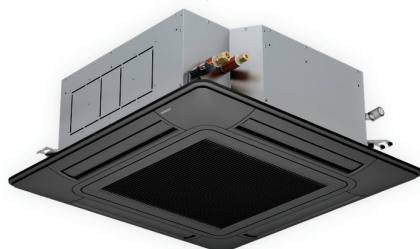
	Natural White		Black
Type of panel	White panel design	White panel design blanc equipped with lifting grid	Black panel design
Part number	P-GP160NAP-EU → RAL 9002	P-GP160NAPU-EU → RAL 9002	P-GP160KAP-EU
Dimensions (HxLxD)	52 x 950 x 950 mm		



Panel lift	d7	01	02	03	04	05	06	07
Descent adjustment from the PC-ARFG2(3)-E(B) wired remote control	Lowers in 7 stages	1.0 m	1.5 m	2.0 m	2.5 m	3.0 m	3.5 m	4.0 m

Standard black P-AP160KA3-EU front panel

Standard white P-N23NA2 front panel



ZPT anti-virus filter

Contains zinc ions—in the presence of moisture, it is capable of inhibiting viruses and bacteria. Ideal for new or existing installations.



99.9% inhibition of SARS-CoV-2, viruses, and bacteria

Numerous contacts are available via the PCC 1A connector: Delayed start, fault delay, thermostat control, remote "on/off."